

### B.2.1 Asian Design/Landscape Element

An example of architecture that celebrates Marina’s Asian community is the Junsay Oaks Apartments, which utilized an Asian-hybrid style. The City intends to encourage the character of buildings, styles, and landscaping that enhance the community’s multicultural identity. This is evident in a General Plan goal that calls for “A City physically and visually distinguishable from the other communities of the Monterey Bay region, with a sense of place and identity in which residents can take pride” (Plan, 10).

The intent of these design elements is to have buildings incorporating subtle elements or modern interpretations of various Asian styles. Table 1 includes common architectural elements and forms that may be integrated into building architecture and common open space.

These goals are compatible with a citizen-led effort to encourage Asian-hybrid styles that recognize the diversity of Marina. A petition signed by more than 350 residents and business owners called for “Asian design elements for buildings and landscaping...[that will] give visibility to the important cultural make-up of the City of Marina.”

Included in this Appendix are images and text that illustrate the roofs and building forms, doors and windows, colors and materials, and elements of ornamentation and landscaping that illustrate the suggested design guidelines for developers to apply in residential, commercial, and mixed-use projects.



Junsay Oaks Apartments.



Top, middle: Landscaping with traditional Asian themes.

Bottom: Building incorporating subtle Asian elements of architecture: Multi-level roofs, horizontal lines, extended roof eaves, simple lines, red door, large windows.

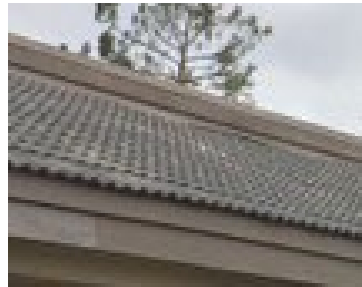
**Table 1. Common Architectural Elements and Forms in Asian-themed Architecture**

Architectural Feature	Implementation
<b>Roof/Building Forms/Exterior Walls</b>	<ul style="list-style-type: none"> <li>• Tiled roof</li> <li>• Multiple roof planes including asymmetrical positioning</li> <li>• Multiple roof pitches</li> <li>• Extended roof eaves</li> <li>• Exposed rafter beams with angled ends</li> <li>• Black/brown horizontal/vertical wood trim over white wall face</li> <li>• Emphasizing horizontal plane</li> <li>• Emphasizing simple, clean lines</li> </ul>
<b>Doors and Windows</b>	<ul style="list-style-type: none"> <li>• Prominent horizontal paned windows</li> <li>• Paned windows in shoji style</li> <li>• Simple 90-degree geometric door ornamentation</li> <li>• Red colored doors</li> <li>• Circular forms</li> <li>• Expansive windows for sense of connectedness to nature</li> </ul>
<b>Colors and Materials</b>	<ul style="list-style-type: none"> <li>• Subdued color pallet</li> <li>• Natural wood</li> <li>• Natural stone</li> <li>• Bamboo</li> <li>• Natural materials and colors</li> <li>• Synthetic materials that simulate natural materials</li> </ul>
<b>Ornamentation/Landscaping</b>	<ul style="list-style-type: none"> <li>• Rock gardens</li> <li>• Stone lanterns</li> <li>• Light fixtures favoring horizontal/vertical lines</li> <li>• Wooden Asian style trellis/arbors</li> <li>• Stone bridges, benches, stepping-stones for accents</li> <li>• Modern/simple designed pagoda style gate</li> </ul>





ROOFS | BUILDING FORMS | EXTERIOR WALLS



Clockwise, from top left: black/brown horizontal/vertical wood trim over white wall fence; emphasis on horizontal plane; multiple roof planes including asymmetrical positioning; extended roof eaves; exposed rafter beams with angled ends; tiled roof; emphasis on simple, clean lines; multiple roof pitches.



## DOORS | WINDOWS



Clockwise, from top left: Paned windows in shoji style; prominent horizontal paned windows; circular forms; simple 90-degree geometric door ornamentation; red colored doors; expansive windows for sense of connectedness to nature.

COLORS | MATERIALS



Clockwise, from top left: Natural materials and colors; natural wood; natural stone; synthetic materials that simulate natural materials; subdued color pallet.

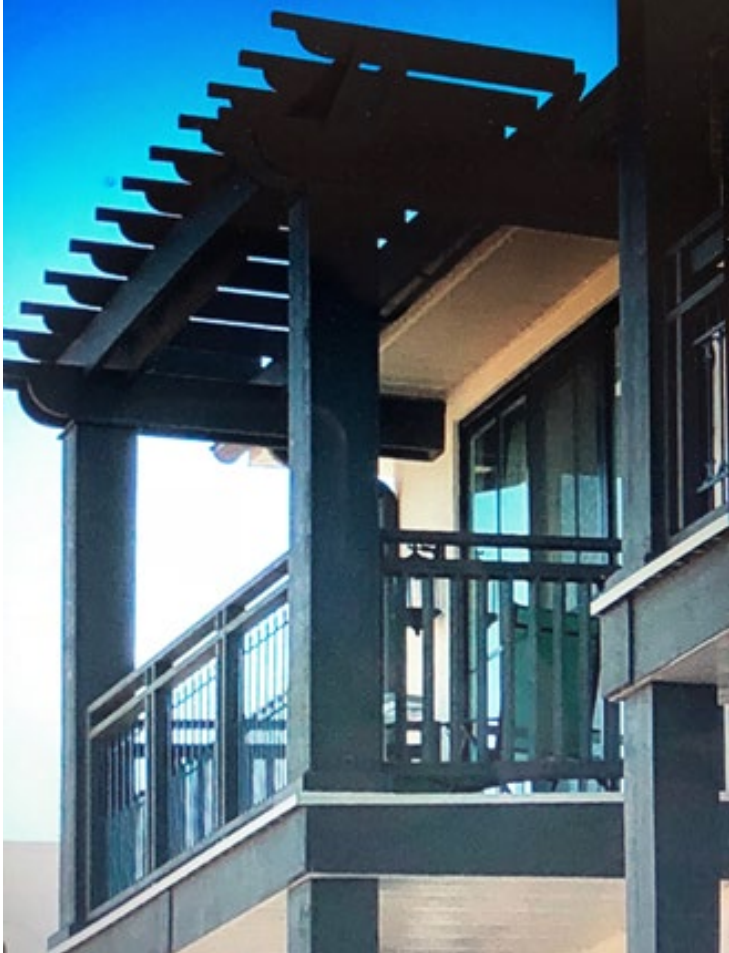




## ORNAMENTATION | LANDSCAPING



Clockwise, from top left: Stone bench; trellis; pagoda-style gate; trellis; lanterns; fence; rock garden; simple landscaping; stepping stones; stone lanterns; rock garden.





## B.3 Suggested Trees for Marina

Trees are an important part of a healthy coastal community. A well-maintained urban forest improves street safety, adds character to neighborhoods and districts, provides habitat for birds and insects, improves drainage, reduces air pollution and heat gain, and creates an inviting street environment. It is important to select ideal trees for Marina’s climate, place trees at appropriate intervals along the street right-of-way, and prune trees to preserve comfortable pedestrian mobility and visibility for drivers in passing cars.

This appendix includes two lists of recommended street trees in Marina. The first list, “Recommended List of Preferred Trees”, was compiled by City Planning Staff and includes the botanical and common names of trees, the mature height and spread of trees, the tolerance of trees to coastal winds and drought, and the suitability of trees for planting in park strips and near overhead utilities.

The second list, “Marina Tree List”, was compiled by the Marina Tree & Garden Club, a group comprised of local volunteers. The Marina Tree & Garden Club has assisted with several significant public and private landscaping projects in Marina, including at the Marina Public Library. This tree list includes the botanical and common names of recommended trees. Online, links for each tree provide additional information, including the maximum height and spread of the tree, the lifespan of the tree, and a narrative description of the characteristics of the tree. A matrix rates the cost of installing and maintaining the tree; the resistance of each tree to drought, wind, frost, and disease; and the propensity of the tree’s roots to upheave sidewalks and interfere with power lines. Finally, the list includes several images of each recommended tree, including local examples of trees with captions explaining their locations.



Top: Red flower gum (*eucalyptus ficifolia*).  
Bottom: Brisbane box (*lophostemon confertus*).

For more information about trees suited for Marina’s climate, visit the following websites:

**Marina Tree & Garden Club**

(<http://www.marinatreeandgarden.org/treelist.html> )

**Urban Forest Ecosystems Institute**

(<https://selecttree.calpoly.edu/> )

**Friends of the Urban Forest**

(<https://www.fuf.net/> )



### B.3.1 Recommended List of Preferred Trees

Tree Species: <i>Botanical name</i> Common name	Mature Size (feet):		Tolerances: (5=Best)		Site Suitability: (5=Best)	
	Height	Spread	Coastal Winds	Drought	Street Tree	Overhead Utilities
<i>Arbutus unedo</i> (2) strawberry tree	20-35	20-35	4	3	5	4
<i>Arbutus 'Marina'</i> strawberry tree	20-35	20-35	2	4	3	3
<i>Brachychiton poulneus</i> bottle tree	30-50	25-30	2	4	3	2
<i>Callistemon citrinus</i> Lemon bottlebrush	20-25	15-20	1	1	2	5
<i>Casuarina cunninghamiana</i> river she-oak	40-70	30-50	4	4	3	1
<i>Casuarina strict</i> coast beefwood	20-35	20-30	5	5	5	3
<i>Cinnamomum camphora</i> camphor tree	30-50	40-50	3	4	4	2
<i>Corynocarpus laevigata</i> New Zealand laurel air	20-40	15-30	2	2	2	3
<i>Cupressus Macrocarpa</i> (2) Monterey cypress	50-80	40-70	5	5	5	1
<i>Erobotrya japonica</i> Loquat	15-30	20-30	3	3	3	4
<i>Eucalyptus ficifolia</i> red flower gum	30-40	20-30	5	4	5	3
<i>Eucalyptus nicholii</i> Willow-leaf peppermint	30-40	20-30	5	4	5	3
<i>Eucalyptus polyanthemos</i> Silver dollar gum	20-60	20-30	4	5	4	1
<i>Eucalyptus viminalis</i> Manna gum	100-150	30-40	4	5	3	1
<i>Geijera Parviflora</i> Australian willow	25-30	15-20	1	2	4	4
<i>Ginko biloba</i> maidenhair autumn gold	35-50	25-40	1	2	2	1
<i>Lauris nobilis</i> Grecian laurel	12-40	15-30	3	3	4	3
<i>Leptospermum laevigatum</i> Australian tea tree	15-30	15-25	5	5	4	4
<i>Liquidambar styraciflua</i> American sweet gum	30-60	25-40	4	4	4	1
<i>Lophostemon Conifertus</i> Brisbane box	35-60	25	5	5	5	1
<i>Lyonothamnue floribuncus</i> Catalina ironwood	30-60	15-20	5	5	5	1

Tree Species: <i>Botanical name</i> Common name	Mature Size (feet):		Tolerances: (5=Best)		Site Suitability: (5=Best)	
	Height	Spread	Coastal Winds	Drought	Street Tree	Overhead Utilities
<i>Malus Floribunda</i> Japan flower crabapple	20-30	15-20	1	2	4	4
<i>Maytenus Boaria</i> green showers	30-50	15-20	1	1	1	2
<i>Melaleuca quinquenervia</i> cajeput tree	20-40	20-35	2	4	4	3
<i>Melaleuca styphelioides</i> rigid leaf paperbark	20-40	20-35	1	2	2	3
<i>Metrosderos excelsus</i> New Zealand Xmas	20-30	20-30	2	2	3	4
<i>Olea europaea</i> Olive	25-30	25-30	4	5	5	4
<i>Pinus canariensis</i> Canary Island pine	60-80	20-40	1	2	1	1
<i>Pinus halepensis</i> Aleppo pine	30-60	20-35	2	4	3	1
<i>Pinus pinea</i> Italian stone pine	30-60	30-50	2	3	2	1
<i>Pinus radiate</i> (2) Monterey pine	60-90	20-40	4	3	3	1
<i>Pinus sabiniana</i> (3) foothill pine	40-50	20-40	1	2	2	2
<i>Pinus Torreyana</i> (3) torrey pine	40-60	30-50	2	2	2	1
<i>Pittosporum crassifolium</i> none	15-25	15-25	5	4	4	5
<i>Pittosporum undulatum</i> Victorian box	30-40	20-40	1	1	2	3
<i>Platanus Acerifolia</i> Sycamore – London Plane	40-80	25-40	1	2	2	1
<i>Podocarpus gracilior</i> African fern pine	30-50	20-35	1	2	1	2
<i>Prunus cerasifolia</i> flowering plum	20-30	15-20	1	3	4	4
<i>Prunus caroliniana</i> Carolina laurel cherry	20-40	20-30	1	1	1	3
<i>Prunus ilicifolia</i> (3) holly leaf cherry	20-30	20-30	1	1	2	4
<i>Pyrus calleryana</i> ornamental flower pear	25-50	25-40	1	1	1	2
<i>Quercus agrifolia</i> (1) California coast live oak	30-40	30-40	2	5	5	3
<i>Quercus Ilex</i> holly oak	30-50	40-50	2	4	3	2



Tree Species: <i>Botanical name</i> Common name	Mature Size (feet):		Tolerances: (5=Best)		Site Suitability: (5=Best)	
	Height	Spread	Coastal Winds	Drought	Street Tree	Overhead Utilities
<i>Quercus suber</i> cork oak	30-50	40-50	1	2	1	2
<i>Rhus lancea</i> African zumac	15-25	15-25	3	3	4	5
<i>Robinia ambigua</i> locust	40-50	15-20	3	2	2	2
<i>Tristania laurina</i> elegant Brisbane box	30-60	20-40	5	5	5	2
<i>Schinus Terebinthifolius</i> Brazilian pepper tree	20-30	20-30	3	3	4	4
Footnotes: 1) Native to Marina 2) Native to Monterey Peninsula 3) Native to California 4) Tree list is not all inclusive 5) More detailed tree information is available at the Planning Division						

### B.3.2 Marina Tree & Garden Club Tree List

Common Name	Botanical Name	Common Name	Botanical Name
<b>Small Trees and Shrubs:</b> Less than 20' tall at maturity. Suitable for sidewalk strips and 36" openings in concrete. Will not lift sidewalks.			
California wild lilac	<i>Ceanothus 'Ray Hartman'</i>	Saratoga bay laurel	<i>Laurus 'Saratoga'</i>
Toyon	<i>Heteromeles arbutifolia</i>	Little Gem Magnolia	<i>Magnolia grandiflora</i>
Italian buckthorn	<i>Rhamnus alaternus</i>		
<b>Medium Trees:</b> 20'-35' tall at maturity. Suitable for street strips, wide medians, yards and areas away from power lines. This list reflects trees that have generally well-behaved roots.			
Mountain She-Oak, Coast Beefwood	<i>Allocasuarina verticillate</i>	Strawberry tree	<i>Arbutus "Marina"</i>
Lemon Bottlebrush	<i>Callistemon citrinus</i>	New Zealand Laurel	<i>Corynocarpus laevigatus</i>
Loquat	<i>Eriobotrya japonica</i>	English Holly	<i>Ilex aquifolium</i>
Heath Melaleuca, Swamp paperbark	<i>Melaleuca ericifolia</i>	Flaxleaf Paperbark	<i>Melaleuca linariifolia</i>
Cajeput Tree	<i>Melaleuca quinquenervia</i>	Black Tea Tree, Prickly Leaf Paperbark	<i>Melaleuca styphelioides</i>
Karo Tree	<i>Pittosporum crassifolium</i>	Fern Pine	<i>Podocarpus gracilior</i>
Catalina Cherry	<i>Prunus ilicifolia ssp lyonii</i>	Small-Leaf Tristania, Water gum	<i>Tristaniopsis laurina</i>
African Sumac	<i>Searsia lancea</i>		
<b>Large Trees:</b> More than 35' tall at maturity. Not suitable under or near power lines or, small street/sidewalk openings. Larger trees will have more issues with roots lifting sidewalks and causing damage.			
Monterey Cypress	<i>Cupressus macrocarpa</i>	Camphor Tree	<i>Cinnamomum camphora</i>
Australian Willow	<i>Geijera parviflora</i>	Red flowering gum	<i>Corymbia ficifolia</i>
Willow-leaf peppermint	<i>Eucalyptus nicholii</i>	Silver Dollar gum	<i>Eucalyptus polyanthemos</i>
Brisbane Box	<i>Lophostemon confertus</i>	Catalina Ironwood	<i>Lyonothamnus floribundus asplenifolius</i>
Canary Island Pine	<i>Pinus canariensis</i>	Allepo Pine	<i>Pinus halepensis</i>
Stone Pine	<i>Pinus pinea</i>	Monterey Pine	<i>Pinus radiata</i>
Torrey Pine	<i>Pinus Torreyana</i>	Island Oak	<i>Quercus tomentella</i>
Coast Live Oak	<i>Quercus agrifolia</i>		
<b>Palm Trees:</b> Palms are long lived at 50-100+ years and some get very large. Not suitable under power lines or small street/sidewalk openings because of mature size.			
Mediterranean Fan Palm	<i>Chamaerops humilis</i>	Dracaena Palm	<i>Cordyline australis</i>
Canary Island Date Palm	<i>Phoenix canariensis</i>	Date Palm	<i>Phoenix dactylifera</i>
California Fan Palm	<i>Washingtonia filifera</i>	Mexican Fan Palm	<i>Washingtonia robusta</i>



*This page intentionally left blank.*

